

10

20

30

40

50

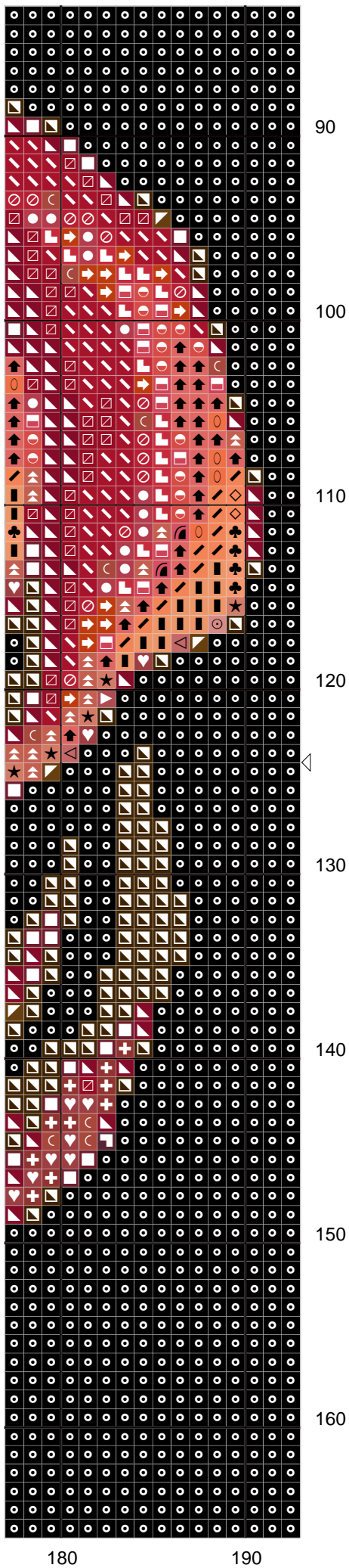
60

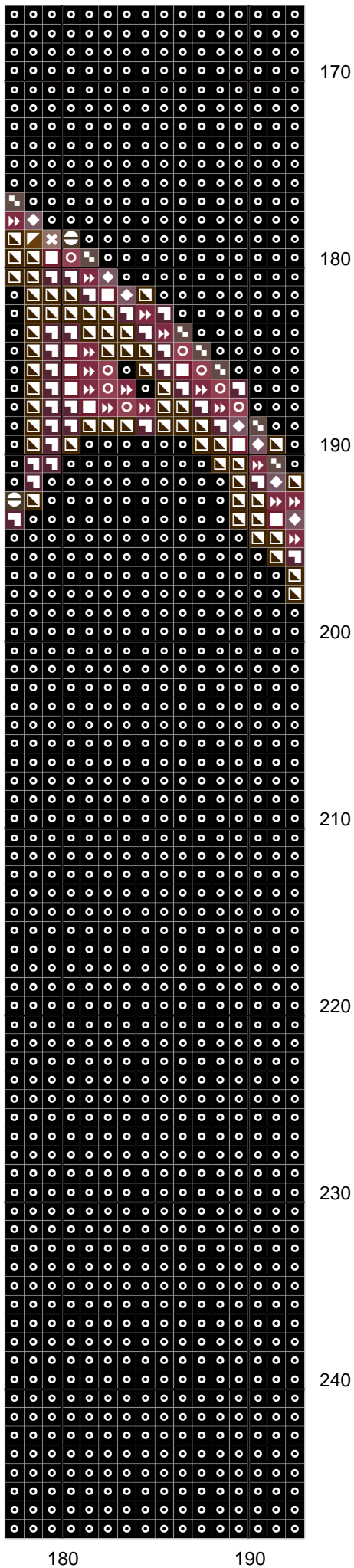
70

80

180

190





180

190



# FAIRY ROSES

Author:	ARXINDA
Grid Size:	193W x 248H
Cloth Count:	14
Fabric:	
Design Area:	35,02 cm W x 44,99 cm H ( 193 x 248 stitches )

## Legend: DMC Stranded Cotton

	154	grape - vy lt		721	orange spice - md		3341	apricot
	221	shell pink - vy dk		722	orange spice - lt		3350	dusty rose - ul dk
	223	shell pink - lt		739	tan - ul vy lt		3705	melon - dk
	301	mahogany - md		758	terra cotta - vy lt		3712	salmon - md
	304	christmas red - md		777	raspberry - vy dk		3721	shell pink - dk
	310	black		779	cocoa - dk		3722	shell pink - md
	315	antique mauve - dk		801	coffee brown - dk		3726	antique mauve - dk
	316	antique mauve - md		816	garnet		3727	antique mauve - lt
	321	christmas red		841	beige brown - lt		3740	antique violet - dk
	326	rose - vy dp		899	rose - md		3777	terra cotta - vy dk
	335	rose		902	garnet - vy dk		3778	terra cotta - lt
	350	coral - md		919	red copper		3801	christmas red - lt
	351	coral		921	copper		3802	antique mauve - vy dk
	352	coral -lt		922	copper -lt		3825	pumpkin - pl
	355	terra cotta - dk		938	coffee brown - ul dk		3827	golden brown - pl
	356	terra cotta - md		945	tawny - md		3830	terra cotta
	402	mahogany - vy lt		3031	mocha brown - vy dk		3859	rosewood - lt
	498	christmas red - dk		3041	antique violet - md		3860	cocoa
	632	desert sand - ul vy dk		3328	salmon - dk		3861	cocoa - lt
	720	orange spice - dk		3340	apricot - md		3864	mocha beige - lt